

Little Giant®

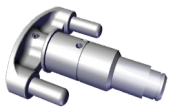
Ladder Systems

HINGE LOCK REPLACEMENT

READ THESE INSTRUCTIONS COMPLETELY BEFORE YOU START. IF YOU DON'T UNDERSTAND THESE INSTRUCTIONS, PLEASE CALL 800-453-1192 FOR ASSISTANCE

1. Failure to comply with all instructions may result in serious injury.
2. Make sure this kit is compatible with your ladder. Before installing this kit, identify all kit components. If any components are missing, damaged or if you have any questions concerning the use of this kit on Little Giant Ladder Systems® products, please contact our Customer Experience Team at 800-453-1192. Do not substitute any components.
3. Inspect the ladder before installing this kit. Repair or replace any damaged or missing parts before using the ladder. Use only Little Giant Ladder Systems® replacement parts. If you are unable to repair it, discard the ladder.

COMPONENTS INCLUDED



HINGE LOCK [1]



PALM BUTTON [1]*

*Color may vary



LARGE SNAP RING[1]



SMALL SNAP RING [1]

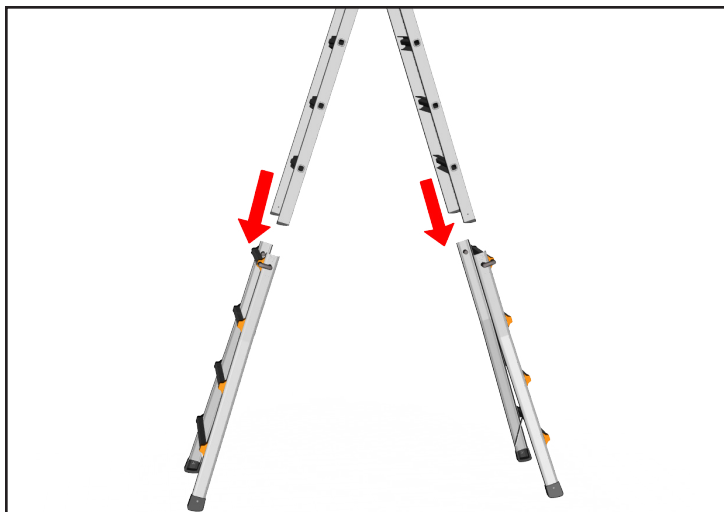
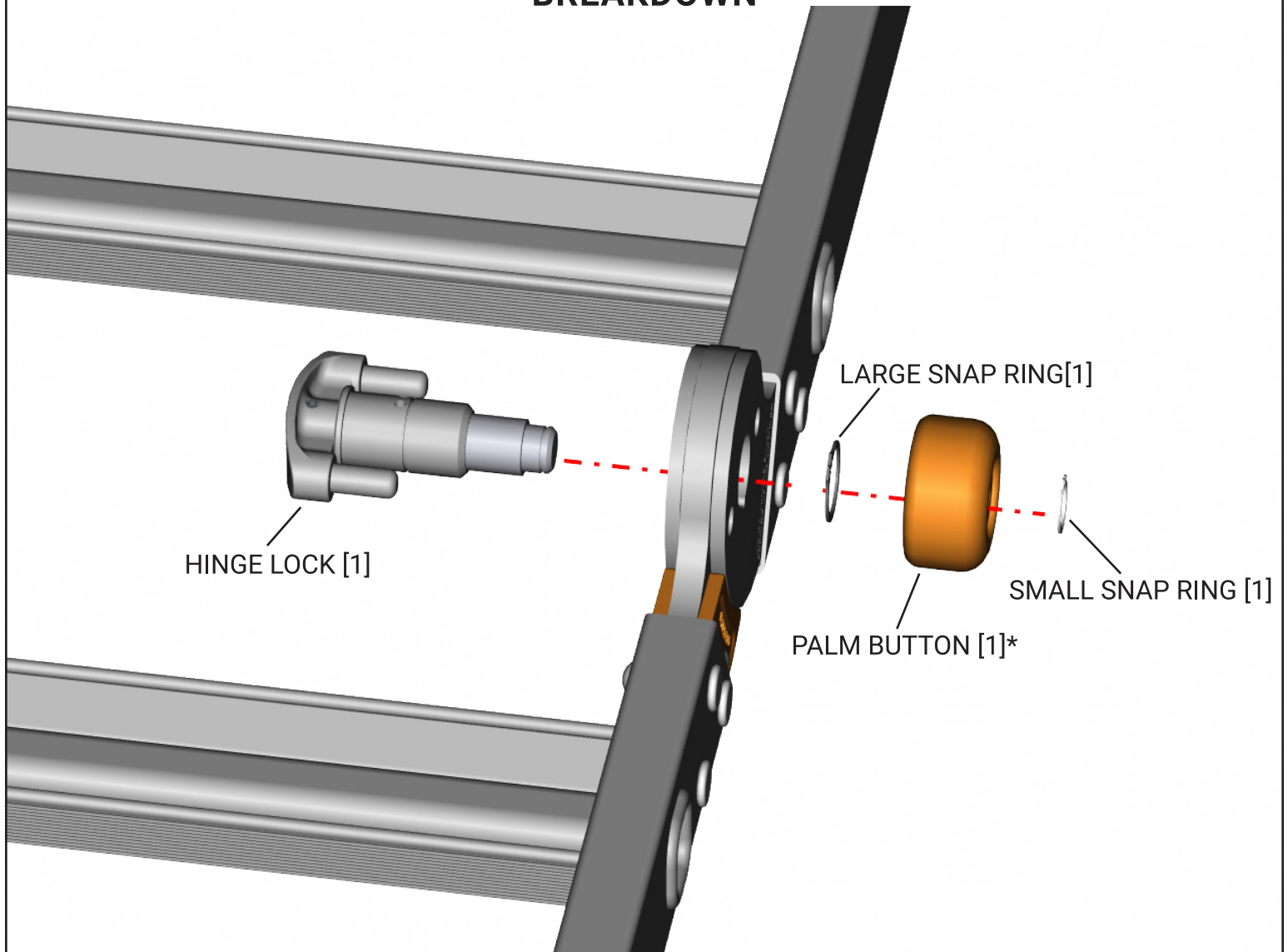
TOOLS REQUIRED



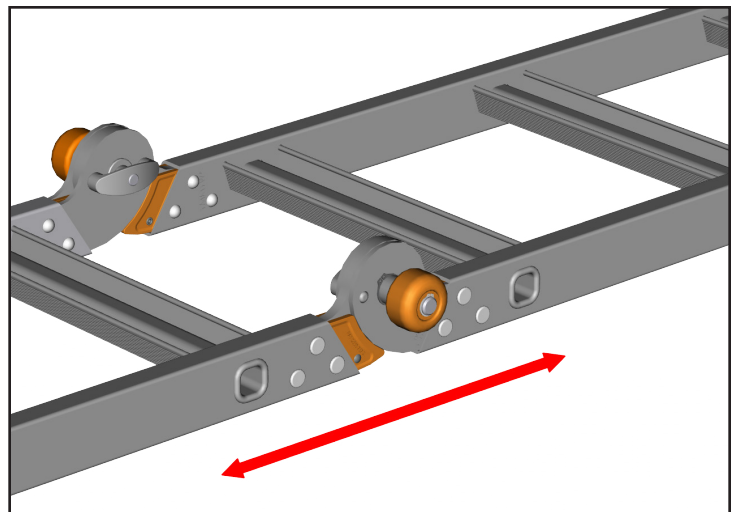
SNAP RING PLIERS

NOTE: IF ANY OTHER PART OF THE LADDER IS DAMAGED BEFORE OR DURING THE PROCESS OF INSTALLING AND/OR REPAIRING, Please contact our customer experience team for assistance at 800-453-1192.
DO NOT USE A DAMAGED LADDER!

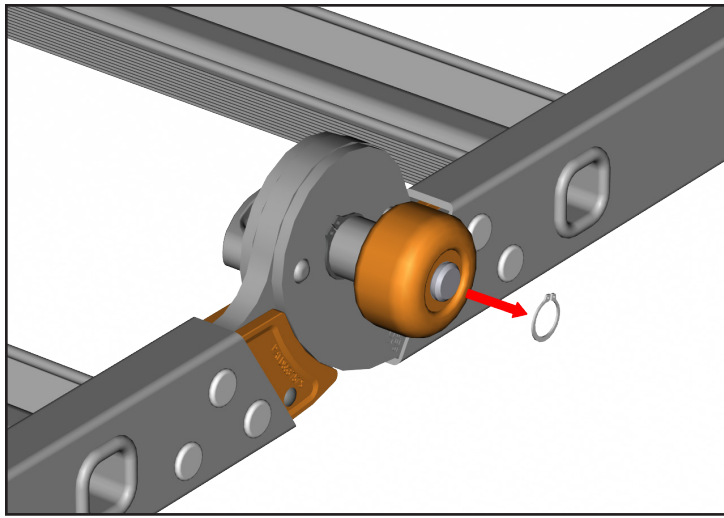
BREAKDOWN



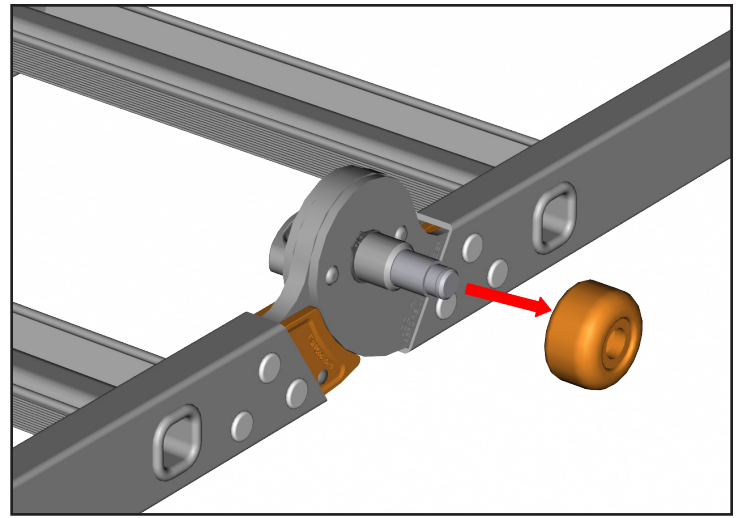
1. Remove the outer assemblies from the inner assembly.



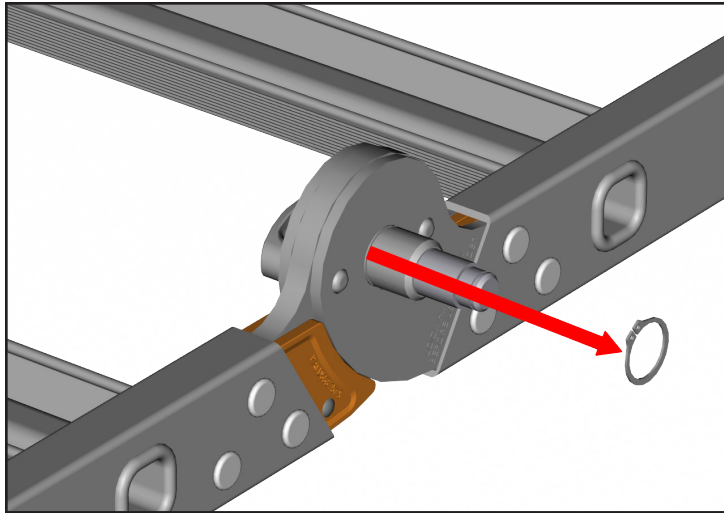
2. Open the ladder to the extended position to remove the existing hinge lock.



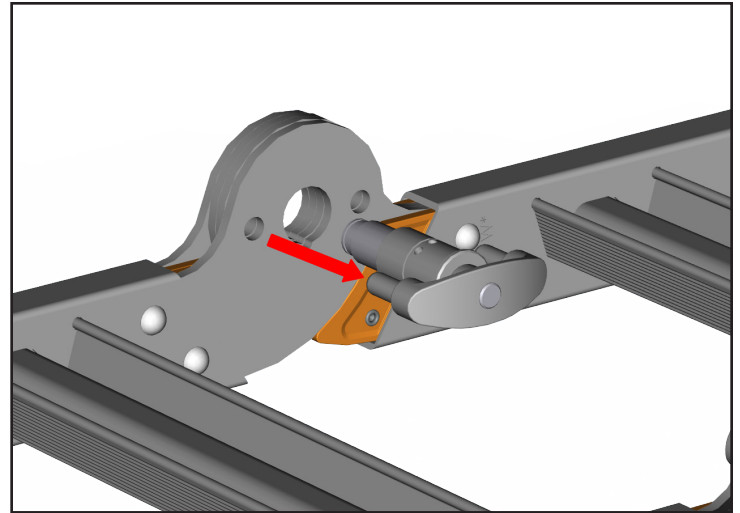
3. Use snap ring pliers to remove the snap ring. Discard the removed snap ring.



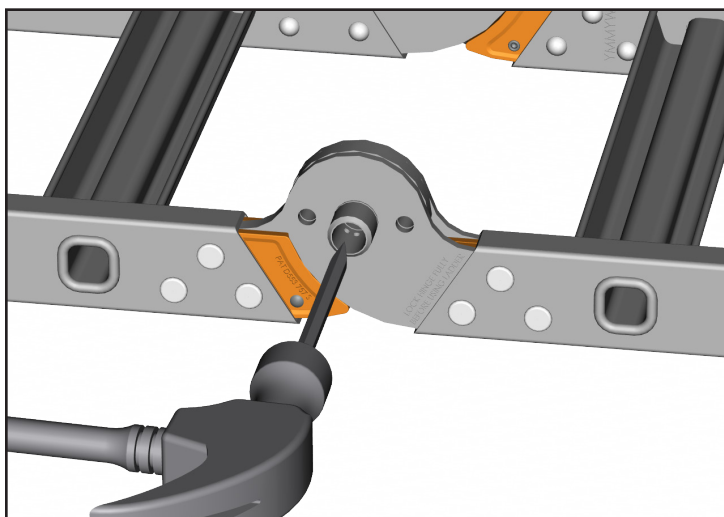
4. Remove the palm button from the shaft of the hinge lock.



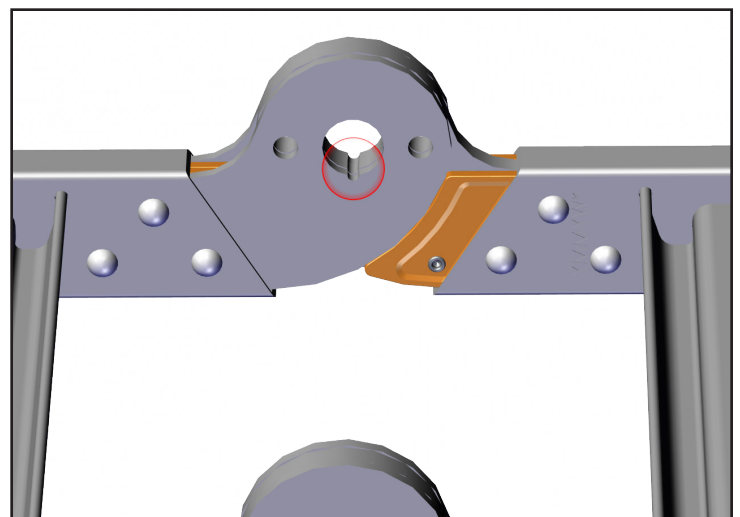
5. Use snap ring pliers to remove the snap ring. Discard the removed snap ring.



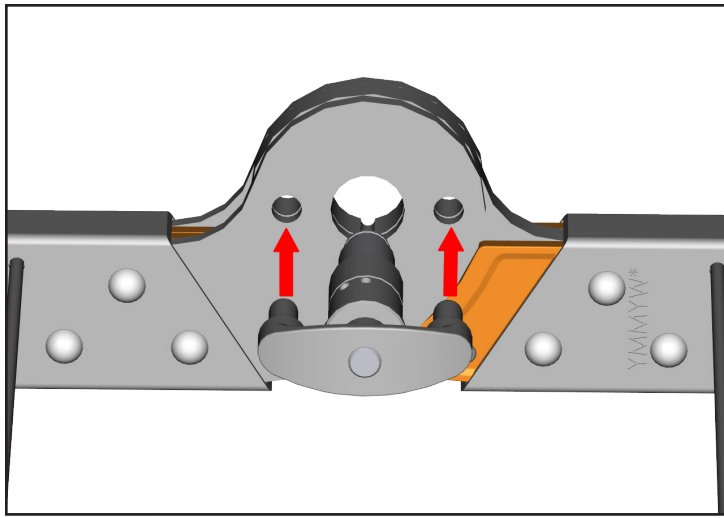
6. Pull the hinge lock from the hinge plates. Dispose of the removed hinge lock.



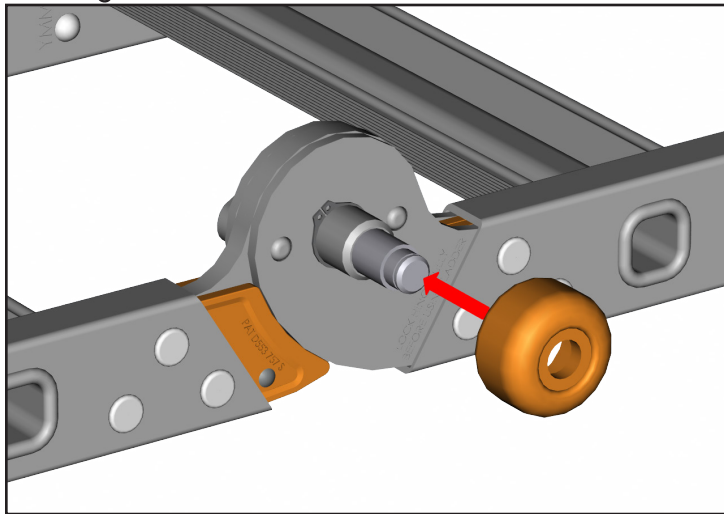
7. If the barrel of the hinge lock remains in the hinge plates, hit the corner of the barrel with a hammer and chisel to remove. Take care not to damage the hinge plate.



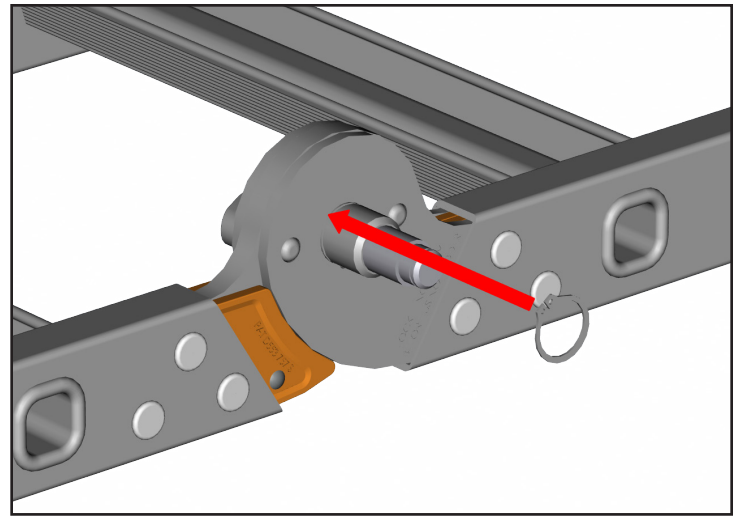
8. Notice the notch running along the bottom edge of the punched hole plate. This notch must remain in line while inserting the new hinge lock.



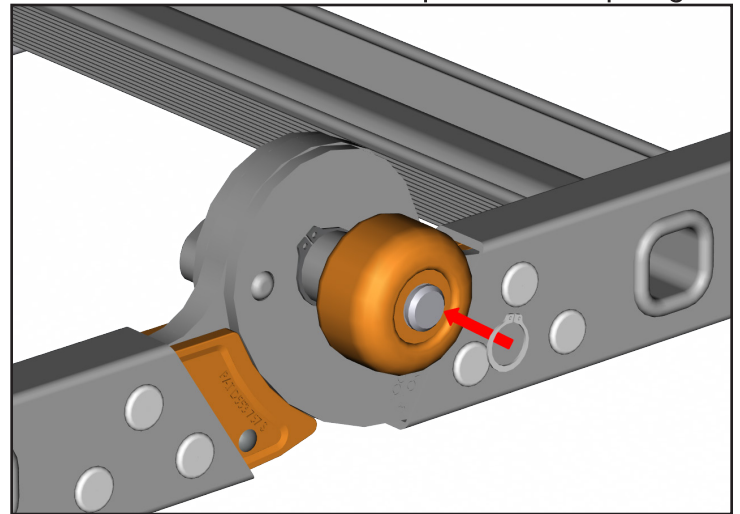
9. Insert the new hinge lock, lining up the nipple on the barrel with the notch, which goes through the center hole of the hinge. Also, align the two lock pins with the two holes in the hinge.



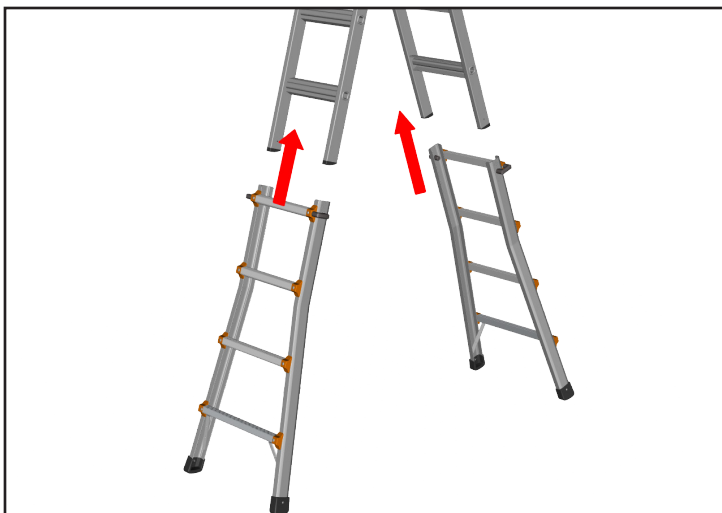
11. Slide the palm button onto the shaft of the hinge lock.



10. Only use the large snap ring supplied in the kit. Install the large snap ring by placing it in the groove of the barrel, making sure it is fully seated around the groove of the barrel.
Make sure not to over-expand the snap ring



12. Place the small snap ring, making sure it is fully seated around the groove. *Make sure not to over-expand the snap ring*



13. Re-install the outer assemblies onto the inner assembly.